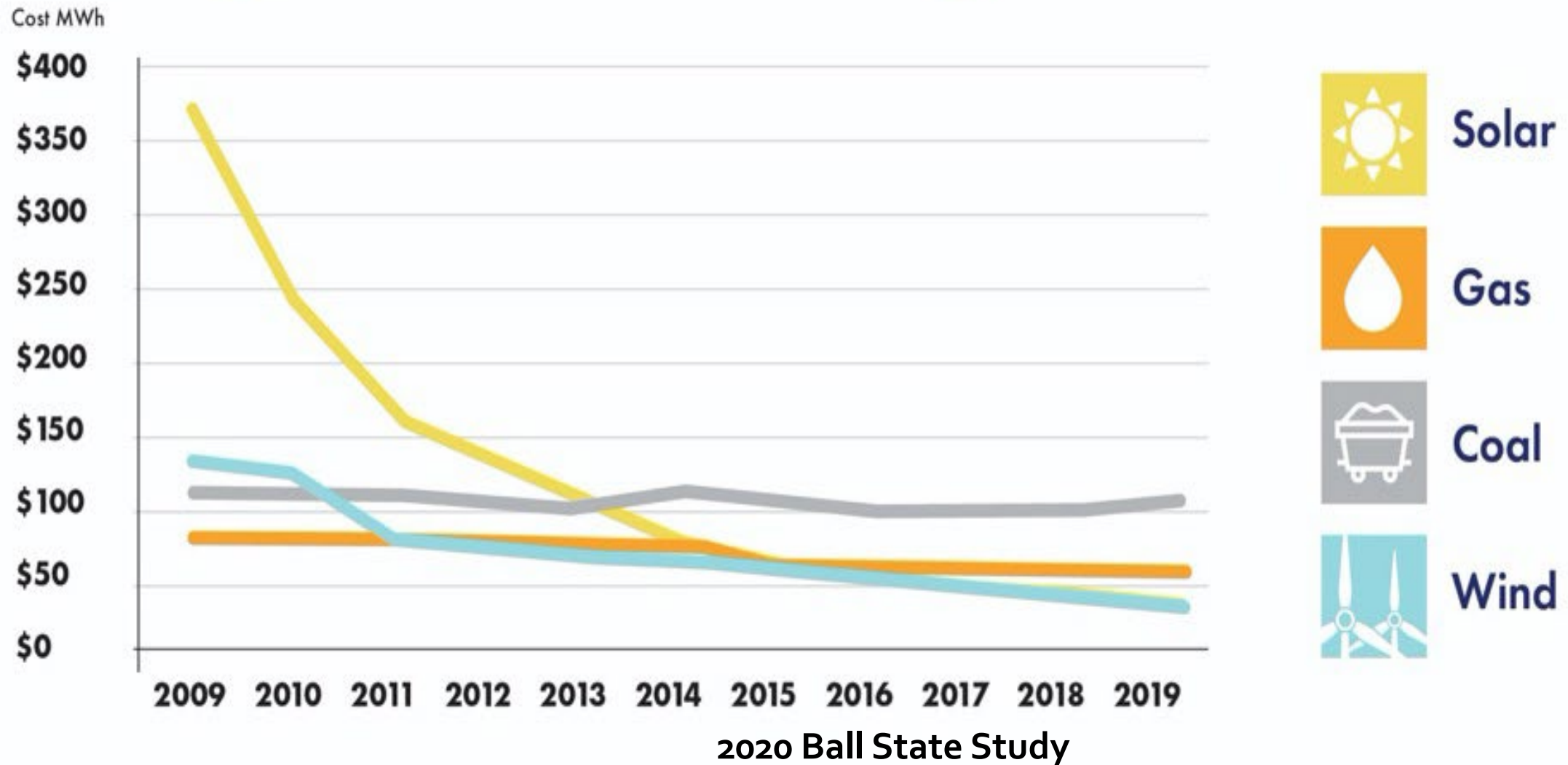




Economic Opportunities with Renewable Energy

Indiana Association of County Commissioners
November 30, 2022

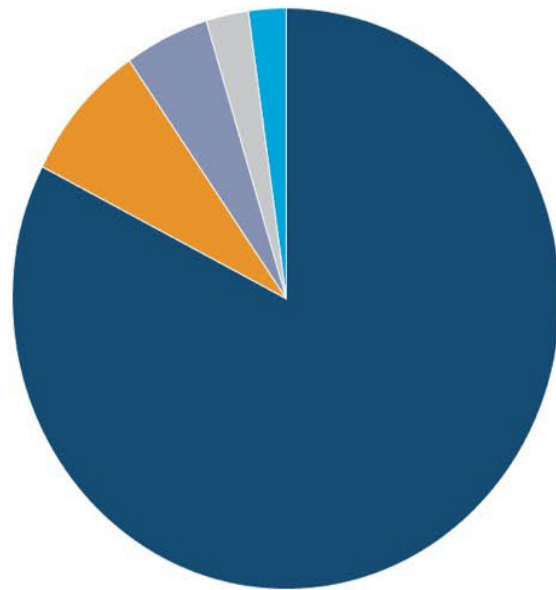
Renewables Are Now More Affordable Than Ever



Renewables on the Rise But Still Room for Growth



Wind has more than doubled since 2010

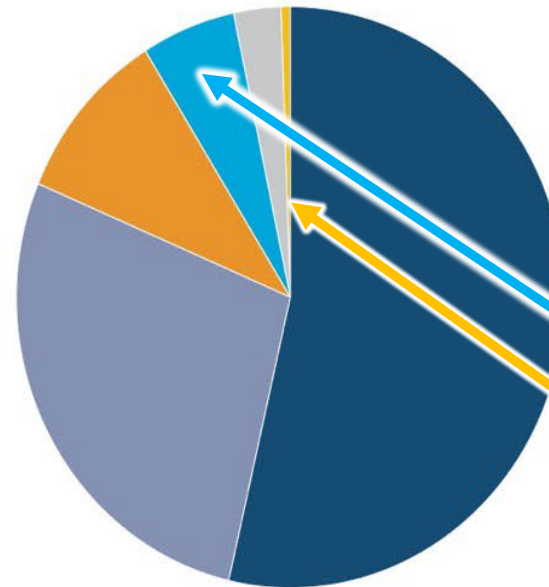


2010

- Coal (82.6%)
- Nuclear (7.9%)
- Natural Gas (4.8%)
- Other (2.5%)
- Wind (2.2%)**
- Solar (0.0%)**



Solar is emerging, with room to grow.

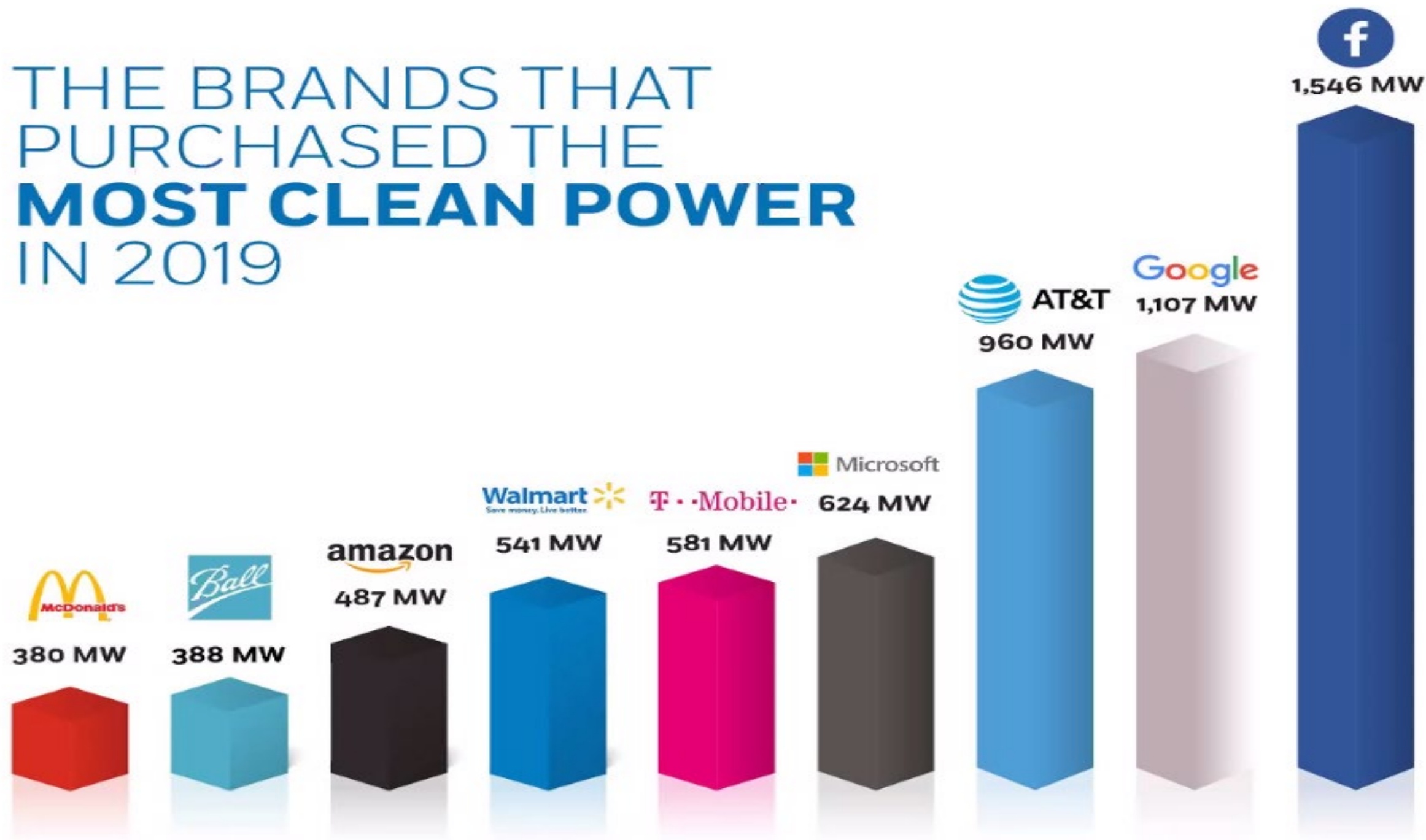


2019

- Coal (53.7%)
- Natural Gas (27.9%)
- Nuclear (9.7%)
- Wind (5.5%)**
- Other (3.0%)
- Solar (0.3%)**

Generation of Electricity by Fuel Type for Indiana Consumers

THE BRANDS THAT PURCHASED THE **MOST CLEAN POWER** IN 2019

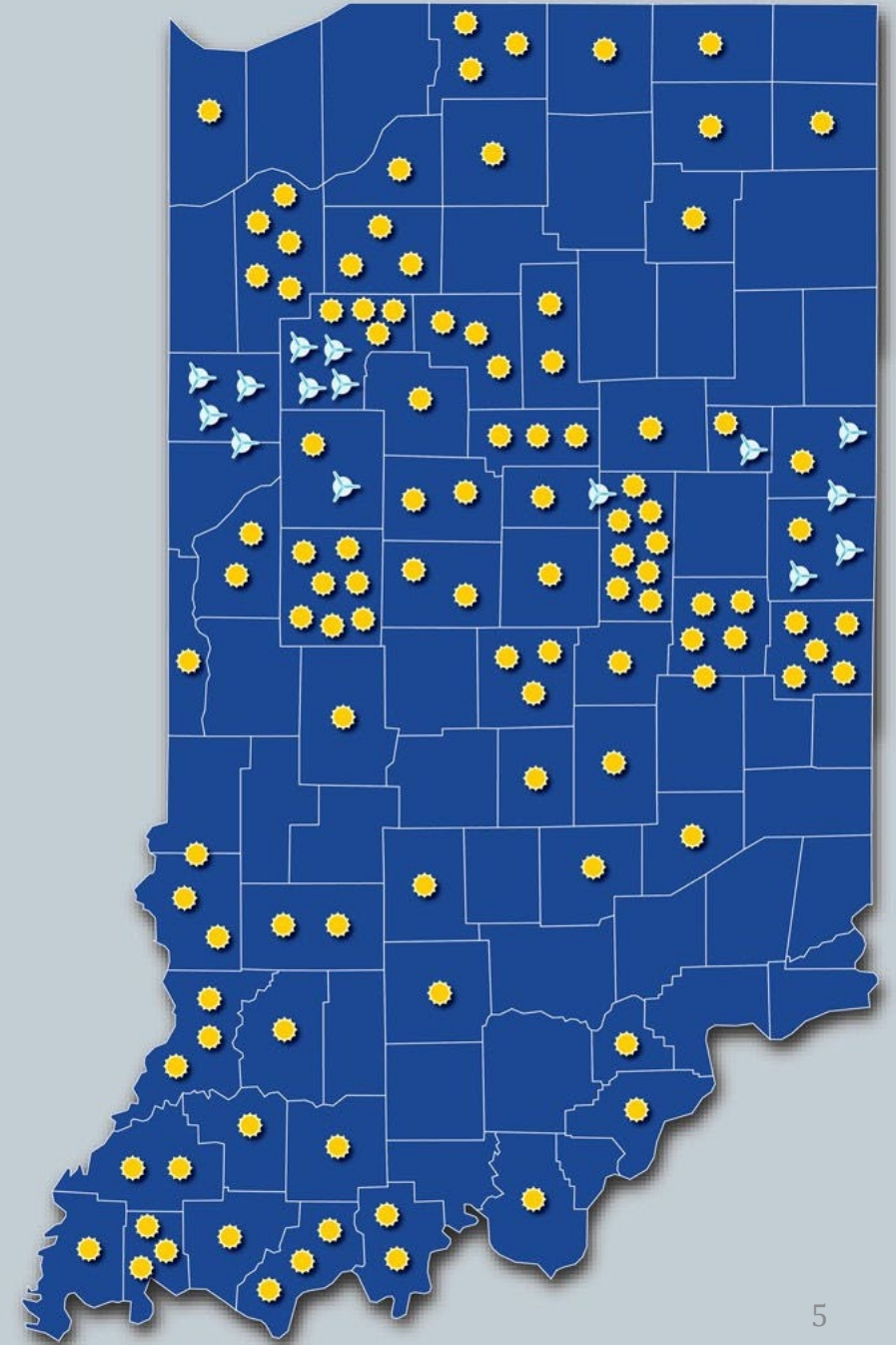


Statewide Energy Production

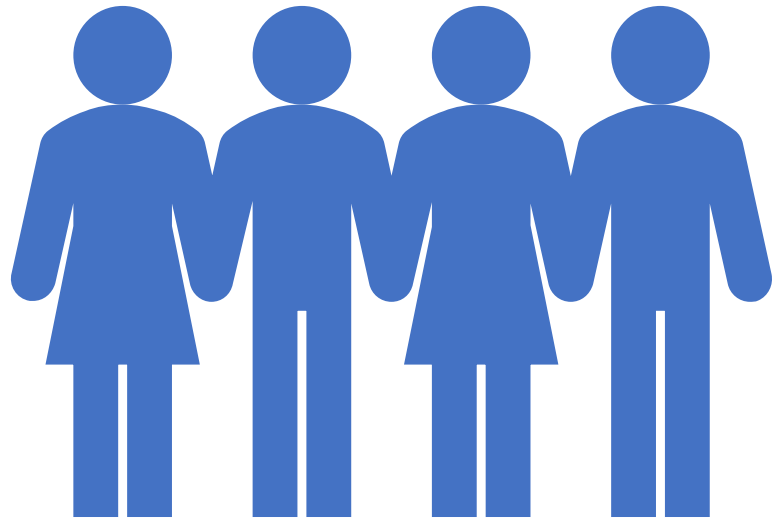
More than 120 renewable energy projects throughout Indiana today, providing:

- **New Job Opportunities;**
- **New Business Opportunities;**
- **Diversified Tax Revenues;**
- **Reduced Carbon Emissions; and**
- **Ability to Power More Than 700,000 Indiana Homes**

MAP SOURCE: Hoosiers for Renewables: www.HoosiersforRenewables.com

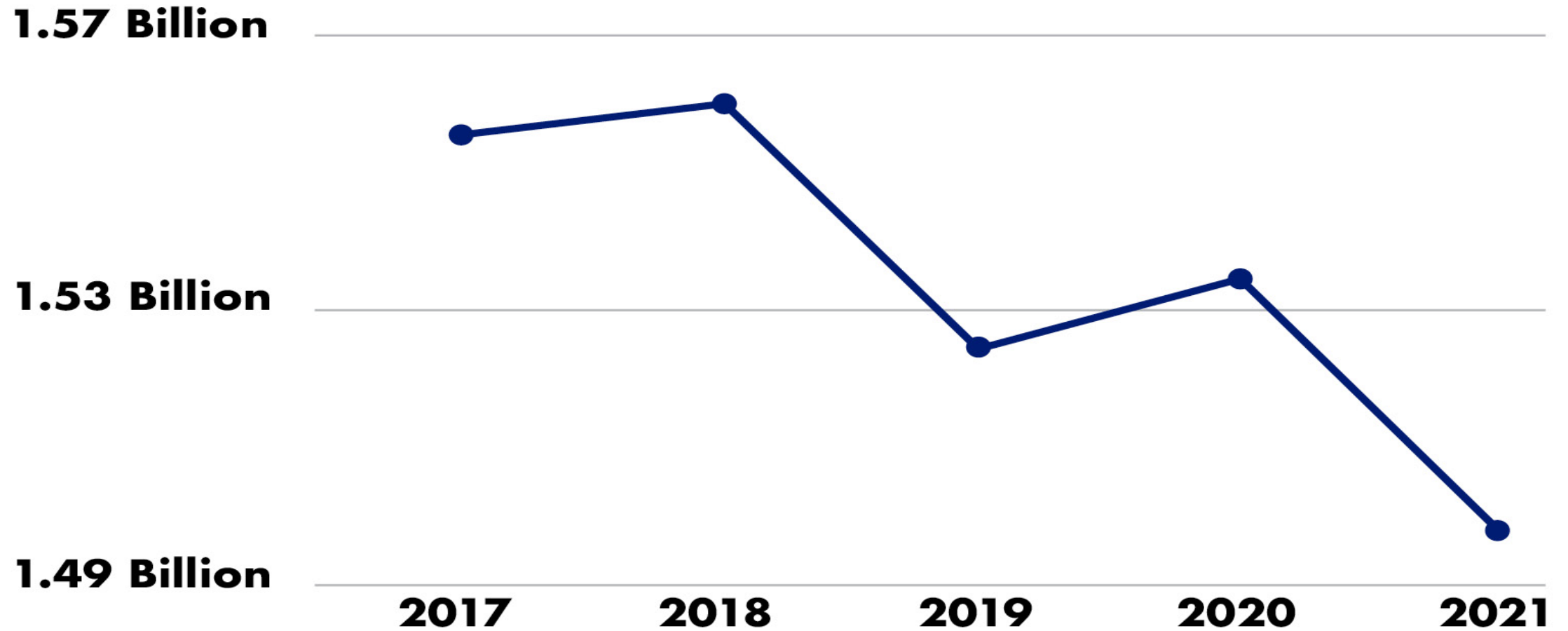


Community Benefits



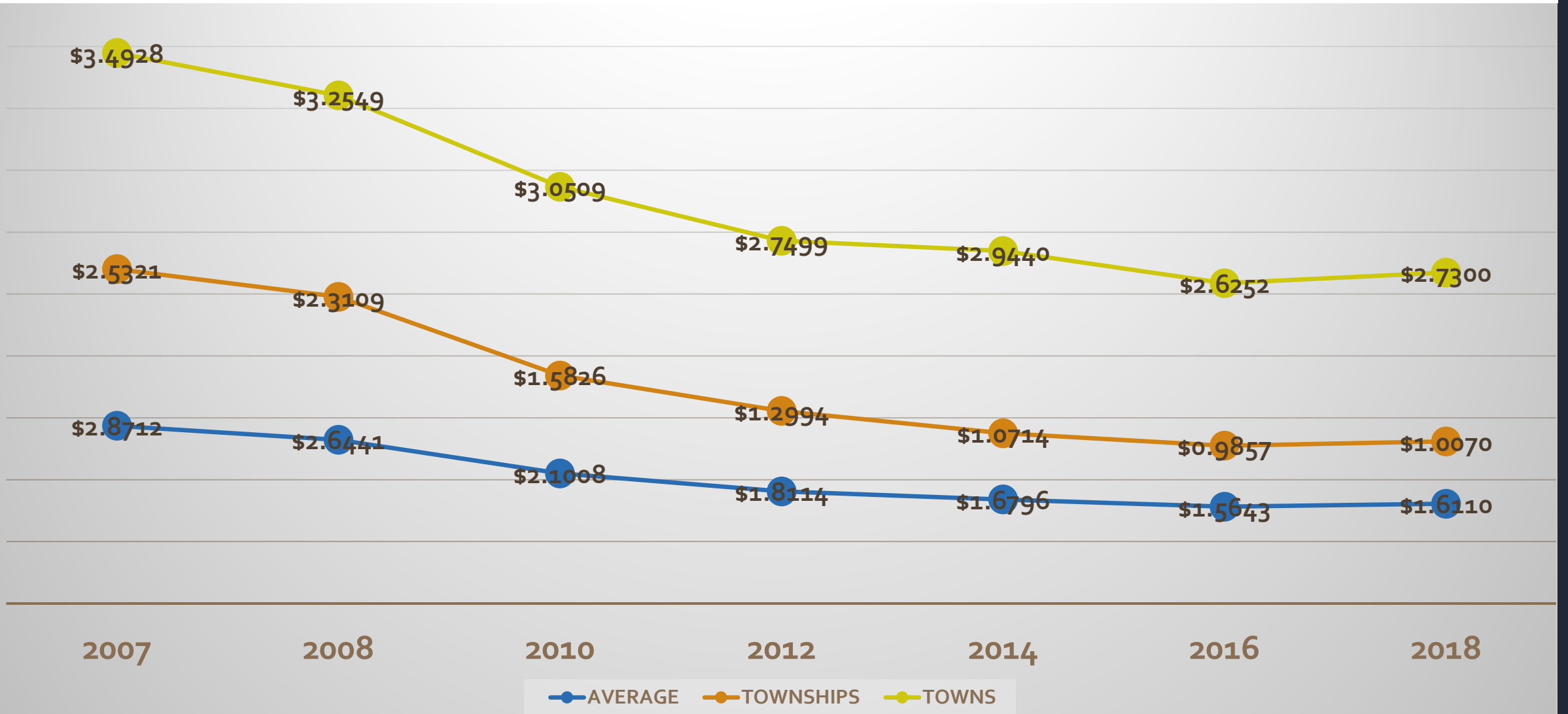
- **Increased Assessed Valuation**
- **Decreased Tax Rates**
- **Infrastructure Improvements**
- **Enhanced Community Services**
- **Development Opportunities**

Renewables Can Help Restore Assessed Value

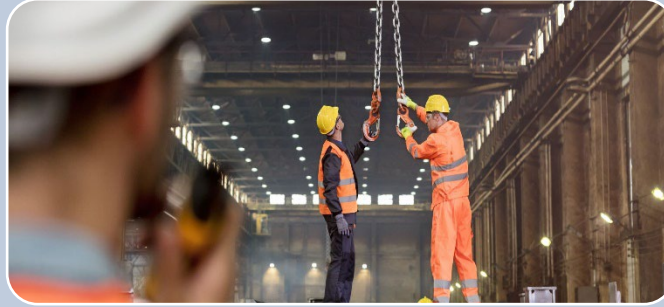


Henry County's assessed value dropped **\$57 Million** from five years ago

Property Tax Impacts – Benton County



Fountain County Cost of Community Services



Residential

\$1.121

Business

\$.768

Agriculture

\$.330

A Cost of Community Services Study For Indiana Counties and School Corporations identifies the cost to provide services compared to each dollar of revenue collected.

Local Economic Impacts

A current 200 MW solar project under development in Indiana will spend more than **\$1 million annually** for payroll, supplies & services.

That's money spent locally to increase the overall economic impact in a county.



Economic Development Payment Verses

Payment in Lieu of Taxes (PILOT)

*There is a difference on how
the county can use the funds.*

Students and Schools Benefit from Renewable Investments



REMODELED PLAYGROUND



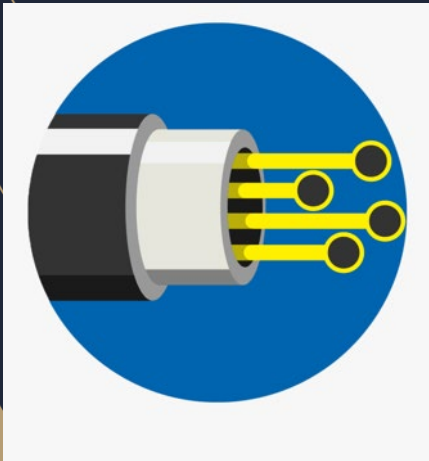
LOCKER ROOM RENOVATION (IN PROGRESS)

Over 10 years, Randolph Southern Schools benefit with \$1,000,000 from renewable energy projects

- Elementary school bleachers and gym floor replaced
- Running track resurfaced and sealed
- Playground and Locker Room remodeled
- New school roof and chiller

Big Broadband Benefit

Three county project
in western Indiana
delivering fiber direct-
to-home for 75% of
the population



Land Use & Farmland Benefits

- Diversification of land & farms
- Land set-aside similar to CREP
- Minimal disruption of soils
- Drainage tiles
- Wildlife impacts minimized
- Land returned to productive farmland



The Zoning Ordinance

**The Zoning Ordinance is about LAND
USE not economics . . .**

**. . . but how the zoning ordinance is
drafted may impact the economics of
the county far beyond this one project.**

ZONING - Things to Consider for Solar



Setbacks

- Participating
- Non-Participating
- Right to Waive



Screening

- Fencing
- Trees



Vegetation

- Appropriate Seed Mixes
- Local input

Resources on Zoning Ordinances

CENTER FOR INFRASTRUCTURE & ECONOMIC DEVELOPMENT

<https://centerforlocalpolicy.org/ordinances/>

IU-ERI / GPI MODEL SOLAR ORDINANCE

<https://eri.iu.edu/documents/in-solar-ordinance-2020-december.pdf>

PURDUE ORDINANCE INVENTORY PROJECT

<https://cdext.purdue.edu/collaborative-projects/land-use/>

Important Development Agreements

01

**Economic
Development
Agreement**

02

**Road Use &
Ditch
Maintenance
Agreement**

03

**Vegetation
Plan**

04

**Decommission
Plan**

Economic Growth for White County

The Meadow Lake Wind Farm has operated for 13 years and generates **800+ Megawatts** of electricity from **414 turbines**

- **63 permanent jobs** in White County
- **\$1.2+ billion** in capital investment
- **\$17.3 million** in local government payments
- **\$51.3 million** in landowner payments
- **100+ miles** of renewed county roads





Saving the Beach



CENTER FOR
Infrastructure & Economic
Development

Thank You

Connie Neiningner

PH: 574.870.0928

Email: CNconsult@outlook.com